



IJSLANDER



## ADVANTAGES

- ✓ Developed in collaboration with TNO and Top Health Partners physiotherapists.
- ✓ EPDM rubber is also available in black.
- ✓ TÜV certified.

## FIFTY+ WOBBLY PATH FIT4LIFE

Article: 1375

The Fifty+ Wobbly path has wobbly stepping stones and supporting handrails on both sides. The handrails are sloped to increase difficulty and/or to vary the exercise. The wobbly stepping stones make the exercise suitable for rehabilitation and the elderly because this device can help improve walking ability and balance. The Fifty+ Wobbly Path is standard equipped with blue EPDM on the handrails and stepping stones.

[Read more on our website](#)

## SPECIFICATIONS



### Fall height

0.18m



### Safe zone

5.5m x 4.4m



### Total weight

140 kg



### Measurement

2.51m x 1.41m x 1.2m



### Play value

Socialising,  
Suppleness, Agility, Muscle  
strength, Exercise, Sports  
activities, Outdoor  
fitness, Cardio, Balance,



### Age

20 - 99



### Heaviest part

25 kg



### Montage

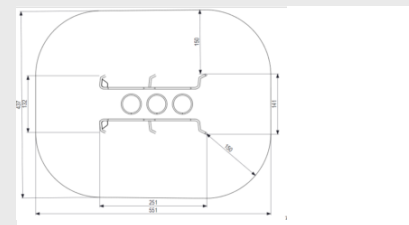
7



### Materials

RVS (buis 42,4x3, koker  
120x40x2,5 en 80x40x3mm, strip  
60x12...

### Veilige zone







**IJSLANDER**

## IMPRESSION

